

**Data Sources:** Trail data acquired by MVPC using a Trimble ProXR Global Positioning System unit and input from volunteers. Other data was supplied by the Town of Boxford, the Town of Georgetown, the Merrimack Valley Planning Commission (MVPC) and the Executive Office of Environmental Affairs/MassGIS (EOEA/MassGIS). The information depicted on this map is for planning purposes only. It may not be adequate for legal boundary definition or regulatory interpretation. Property boundaries are not surveyed based. All trails reside on publicly assessable land. Please respect private property boundaries.

A State Designated Regional Service Center  
 "Mapping the Crossroads of New England"  
 Merrimack Valley Planning Commission (MVPC)  
 160 Main Street  
 Haverhill MA, 01830

*J:\Arcview\regionaltrails2004.apr\Box\Given Trails121203 Printed Dec. 13 2004 MDF*

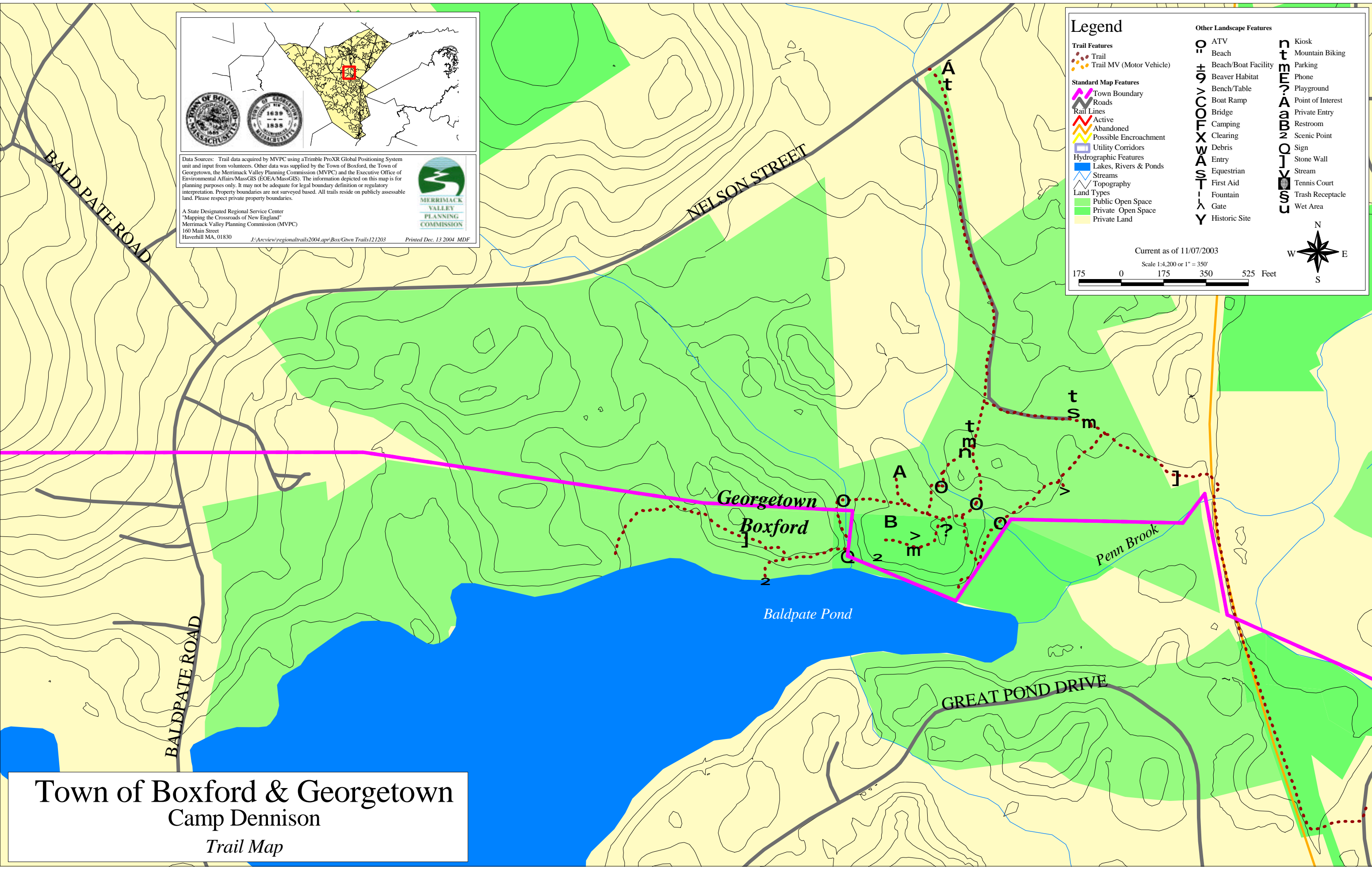
### Legend

<b>Trail Features</b>	<b>Other Landscape Features</b>
Trail	ATV
Trail MV (Motor Vehicle)	Beach
<b>Standard Map Features</b>	Beach/Boat Facility
Town Boundary	Beaver Habitat
Roads	Bench/Table
Rail Lines	Boat Ramp
Active	Bridge
Abandoned	Camping
Possible Encroachment	Clearing
Utility Corridors	Debris
Topography	Entry
Lakes, Rivers & Ponds	Equestrian
Streams	First Aid
Land Types	Fountain
Public Open Space	Gate
Private Open Space	Historic Site
Private Land	

○	Kiosk
⊕	Mountain Biking
⊙	Parking
⊕	Phone
⊙	Playground
⊕	Point of Interest
⊙	Private Entry
⊕	Restroom
⊙	Scenic Point
⊕	Sign
⊙	Stone Wall
⊕	Stream
⊙	Tennis Court
⊕	Trash Receptacle
⊙	Wet Area

Current as of 11/07/2003  
 Scale 1:4,200 or 1" = 350'  
 175 0 175 350 525 Feet



**Town of Boxford & Georgetown**  
 Camp Dennison  
 Trail Map